



# Determination of Operating Parameters and Performance Analysis of Computer Networks with Paraconsistent Annotated Evidential Logic $E_{\tau}$

Avelino Palma Pimenta Junior, Jair Minoro Abe, Genivaldo Carlos Silva

## ► To cite this version:

Avelino Palma Pimenta Junior, Jair Minoro Abe, Genivaldo Carlos Silva. Determination of Operating Parameters and Performance Analysis of Computer Networks with Paraconsistent Annotated Evidential Logic  $E_{\tau}$ . IFIP International Conference on Advances in Production Management Systems (APMS), Sep 2016, Iguassu Falls, Brazil. pp.3-11, 10.1007/978-3-319-51133-7\_1 . hal-01615762

**HAL Id: hal-01615762**

**<https://inria.hal.science/hal-01615762>**

Submitted on 12 Oct 2017

**HAL** is a multi-disciplinary open access archive for the deposit and dissemination of scientific research documents, whether they are published or not. The documents may come from teaching and research institutions in France or abroad, or from public or private research centers.

L'archive ouverte pluridisciplinaire **HAL**, est destinée au dépôt et à la diffusion de documents scientifiques de niveau recherche, publiés ou non, émanant des établissements d'enseignement et de recherche français ou étrangers, des laboratoires publics ou privés.



Distributed under a Creative Commons Attribution 4.0 International License

# Determination of Operating Parameters and Performance Analysis of Computer Networks with Paraconsistent Annotated Evidential Logic $E\tau$

Avelino Palma Pimenta Junior, Jair Minoro Abe, and Genivaldo Carlos Silva

Paulista University, São Paulo, Brazil  
appimenta@gmail.com

**Abstract.** Computer networks have two important characteristics: the vast diversity of connecting devices and a great variability of the physical distribution of equipments. Therefore, the performance analysis of a specific network based on absolute references or third parties may not be applicable in all circumstances, especially in highly complex and heterogeneous networks. Indeed, it carries a high degree of uncertainty, and the classical logic may not be appropriate to deal it. This paper aims to parameterize and evaluate the operating elements of heterogeneous networks, from the analysis of representative attributes, based on concepts of Paraconsistent Annotated Evidential Logic  $E\tau$ .

**Keywords:** Paraconsistent logic · Computer networks · Network parameterization · Pattern recognition

## 1 Introduction

Computer networks are currently used in most companies, and represent an important means of interoperability and data communication. As the World Wide Web and users are explicating at a very rapid rate, the performance of World Wide Web systems become rapidly high [1]. Since its inception, the foundation for the deployment of networks pointed to a variety of devices from different manufacturers and architectures, and often operates at varying speeds. The different links in the local area network can operate at different speeds and can run at different medias, such as 1 Gbps or 100 Mbps, copper or fiber [2]. The copper-based communications encode data via electrical impulses, unlike the optical fiber that uses light signals for this purpose. The existence of these two physical means of data communication, in varying degrees of use, must be rendered compatible. However, the communication of heterogeneous systems is not always an easy task, and it is not always possible to obtain optimal and predictable results.

A computer network consists of several connected hosts, which can be represented by a desktop, a laptop, a smartphone, among others. In such an heterogeneous client environment, efficient content adaptation and delivery services are becoming a major requirement for the new Internet service infrastructure [3].

However, many of these equipments may have different architectures, and also use different operating systems and applications.

All the previous elements are part of computer networks, but also constitute as conflict elements, which makes it even more difficult to measure the performance of a network. Typical evaluation methods, such as benchmark performance, however, are limited in applicability. Often they are not representative of the traffic characteristics of any customer facility [4]. The issue of uncertainty, therefore, should be considered. A possible solution could be the analysis of experts in the field of computer networks. This approach may not be suitable for all cases, since not always the professional knows profoundly the network to be analyzed. Moreover, although differences exist, some elements are common in network communications. For the establishment of network communication, there must always be a request from the side of the "client". It is a typical protocol of request-response, which controls the data transfer between server and client (such as a web browser) [5].

This request, when answered by the side of the "server" – typically a proxy, produces a corresponding response. Proxy servers are designed with three goals: decrease network traffic, reduce user (client) perceived lag, and reduce loads on the origin servers [6].

Every request from the client passes through the proxy server, which in turn may or may not modify the client request based on its implementation mechanism [7]. This response is accompanied by several attributes that can be used to analyze network performance. The most representative attributes may be used as a means of determining the network operating parameters. This work aims to analyze and detect problems in a computer network from a public university with about two hundred hosts, divided into two different departments (academic and administrative) with the aid of Paraconsistent Logic. In the academic department, there are six computer labs with twenty hosts each, plus two coordination rooms, with the total of ten hosts each. In the administrative department, five operating rooms, with approximately fifty hosts, as well as servers, routers and switches, all connected by copper or fiber optic links, and operating for fifteen hours a day, five days a week. Each department has different needs and use different services and applications. Therefore, it is clear the high degree of heterogeneity and uncertainty of the analyzed scenario, which makes it appropriate to use a non-classical logic, the subject of this paper.

## 2 Methodology

Responsive service plays a critical role in determining end-user satisfaction. In fact a customer who experiences a large delay after placing a request at a business's web server often switches to a competitor who provides faster service [8]. Network infrastructure needs to be constantly improving to satisfy QoS (Quality of Service) users demand, including both technology aspects (e.g. fastest links, proxies and servers) and related software [9].

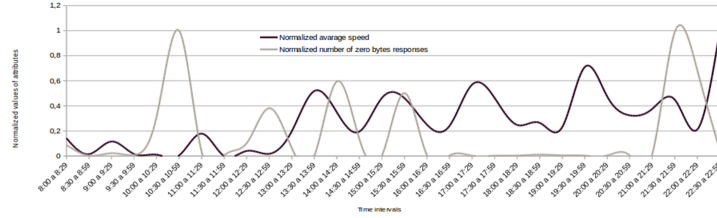
To parameterize the operation of the network, a day of operation shall be monitored, during 15 hours, divided into 30-minute intervals. Some of the most significant attributes shall be used, such as: Total network packets (bytes); Total response time (ms); Average speed (bytes/ms); Number of requests; Number of zero bytes responses. From the network logs, it is possible to extract the values of the attributes, shown in Table 1 :

**Table 1.** Attributes values obtained from a day operation of a computer network

Hour interval	Total network packets (bytes)	Total response time (ms)	Average speed (bytes/ms)	Number of requests	Number of zero bytes responses
8:00 a 8:29	101550313	186703410	0,543912471	3311	779
8:30 a 8:59	101317599	384871739	0,263250295	4515	32
9:00 a 9:29	144107833	296218480	0,486491704	5020	201
9:30 a 9:59	149058945	558951986	0,266675759	10348	84
10:00 a 10:29	153643549	603540143	0,254570555	13126	2705
10:30 a 10:59	129625661	535538428	0,242047357	18442	8644
11:00 a 11:29	113215036	181009325	0,625465213	6829	296
11:30 a 11:59	98916878	429472435	0,230321832	2671	40
12:00 a 12:29	89950808	281068865	0,320031207	5051	894
12:30 a 12:59	93957712	348408989	0,269676486	6844	3304
13:00 a 13:29	40352244	60526974	0,666681999	1489	568
13:30 a 13:59	34759397	25246230	1,37681535	1786	7
14:00 a 14:29	82984378	82816003	1,002033122	8493	5147
14:30 a 14:59	103544699	156568116	0,661339624	5180	1180
15:00 a 15:29	97323535	77590646	1,254320463	4090	19
15:30 a 15:59	111349090	88934444	1,252035601	9973	4345
16:00 a 16:29	116516110	148779326	0,783147183	8299	59
16:30 a 16:59	134981701	177338304	0,76115367	9268	43
17:00 a 17:29	101774848	98992388	1,028107818	6730	36
17:30 a 17:59	84745862	67398212	1,257390359	3868	28
18:00 a 18:29	63605693	81593640	0,77954229	5449	38
18:30 a 18:59	92411148	113160272	0,8166395	5153	109
19:00 a 19:29	91532492	124104104	0,737546052	2359	55
19:30 a 19:59	200608215	111540378	1,798525508	4727	37
20:00 a 20:29	255225540	199250269	1,280929463	5517	49
20:30 a 20:59	184581912	194732439	0,947874494	4061	44
21:00 a 21:29	159659251	150403821	1,0615372	3676	146
21:30 a 21:59	119997798	98105026	1,223156477	12739	8554
22:00 a 22:29	126283972	180791028	0,698507959	10007	5917
22:30 a 22:59	170579432	69887729	2,4407637	4500	398

The first attribute is used to analyze the response time (in milliseconds) related to the conducted requests. The second attribute is related to the volume of data (in bytes) that was requested in a given interval. At first, one might think

that the higher the value, the more efficient the network operation. However, this attribute is loaded of uncertainty, considering that it can also denote network congestion. The third attribute range is calculated based on the first two, by simple arithmetic average, to calculate the use of network bandwidth. The fourth attribute is the number of requests that occurred in a given interval. This attribute itself is not enough to determine the level of the network quality. A network with many requests may indicate either a good performance or a high rate of retransmissions, which is considered undesirable. The fifth attribute is especially important when considered in conjunction with the fourth attribute, as it allows differentiating situations where there is large number of retransmissions. The obtained values of the attributes are then tabulated and normalized in the range from 0 to 1. For a contextualized view, the image of Figure 2 can give a good idea of network operation from two significant parameters: average speed and number of zero bytes responses: Figure 1:



**Fig. 1.** Comparison between average speed and number of zero bytes responses

With the values obtained, it is possible to analyze specific scenarios in the operation of a network, through the development of a ranking of the evidence (favorable/unfavorable) in the Paraconsistent Annotated Evidential Logic  $E\tau$ .

The concepts of Paraconsistent Logic  $E\tau$  will be used from this point. According to Abe [10]: “The atomic formulas of the logic  $E\tau$  are of the type  $p(\mu, \lambda)$ , where  $(\mu, \lambda) \in [0, 1]^2$  and  $[0, 1]$  is the real unitary interval ( $p$  denotes a propositional variable)”. Therefore,  $p(\mu, \lambda)$  can be intuitively read: “It is assumed that  $p$ ’s favorable evidence is  $\mu$  and unfavorable evidence is  $\lambda$ ”. This will lead to the following conclusion:  $p_{(1.0,0.0)}$  can be read as a true proposition;  $p_{(0.0,1.0)}$  as false;  $p_{(1.0,1.0)}$  as inconsistent;  $p_{(0.0,0.0)}$  as paracomplete; and  $p_{(0.5,0.5)}$  as an indefinite proposition. To determine the uncertainty and certainty degrees, the formulas are [11]:

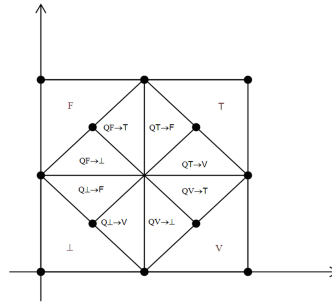
- Uncertainty degree:  $G_{un}(\mu, \lambda) = \mu + \lambda - 1$  ( $0 \leq \mu, \lambda \leq 1$ );
- Certainty degree:  $G_{ce}(\mu, \lambda) = \mu - \lambda$  ( $0 \leq \mu, \lambda \leq 1$ );

An order relation is defined on  $[0, 1]^2$ :  $(\mu_1, \lambda_1) \leq (\mu_2, \lambda_2) \Leftrightarrow \mu_1 \leq \mu_2$  and  $\lambda_2 \leq \lambda_1$  constituting a lattice that will be symbolized by  $\lambda_1$ , constituting a lattice that will be symbolized by  $\tau$ .

With the uncertainty and certainty degrees, it is possible to manage the following 12 output states, showed in the Table 2 and represented in Figure 2:.

**Table 2.** Extreme and non-extreme states

Extreme states	Symbol	Non-extreme states	Symbol
True	V	Quasi-true tending to Inconsistent	$QV \rightarrow T$
False	F	Quasi-true tending to Paracomplete	$QV \rightarrow \perp$
Inconsistent	T	Quasi-false tending to Inconsistent	$QF \rightarrow T$
Paracomplete	$\perp$	Quasi-false tending to Paracomplete	$QF \rightarrow \perp$
		Quasi-inconsistent tending to True	$QT \rightarrow V$
		Quasi-inconsistent tending to False	$QT \rightarrow F$
		Quasi-paracomplete tending to True	$Q\perp \rightarrow V$
		Quasi-paracomplete tending to False	$Q\perp \rightarrow F$



**Fig. 2.** Decision-making states of Lattice  $\tau$

Based on the values of the attributes, obtained from one day operation of the computer network, two different scenarios from two time intervals on another day of operation will be analyzed in order to verify the operation of the network. In the selected intervals, the following values were obtained, as shown in Table 3: A computer network that is operating at high speeds within its parameters

**Table 3.** Network attributes from two assessed scenarios

Scenarios	Total network packets (bytes)	Total response time (ms)	Average speed (bytes/ms)	Number of requests	Number of zero bytes responses
1	99646060	228119138	0.4368158712	4086	40
2	126428976	76538921	16.518.259.514	11238	5532

is taken as favorable evidence. Therefore the average speed attribute can be considered a directly proportional greatness. This argument can also be applied to the number of requests attribute, since it indicates that the network has been operated in full working capacity to meet the user demands. In what concerns the zero byte responses attribute, the opposite occurs, as a network with high non responses indicates that the searched resources could not be found, thus it can be considered an inversely proportional greatness.

In both evaluated scenarios, the attribute values shall be normalized based on the operating values of the computer network. These values shall be used as degrees of favorable evidence for the average speed and number of requests attributes, as directly proportional greatnesses. The opposite shall be applied to the number of zero bytes responses attribute. In this case, the favorable evidence shall be defined as its denial. The favorable ( $\mu$ ) and unfavorable ( $\lambda$ ) degree evidences are taken from the normalized values of the attributes, and are presented in Table 4:

**Table 4.** Normalized values and favorable ( $\mu$ ) and unfavorable ( $\lambda$ ) evidences of the attributes

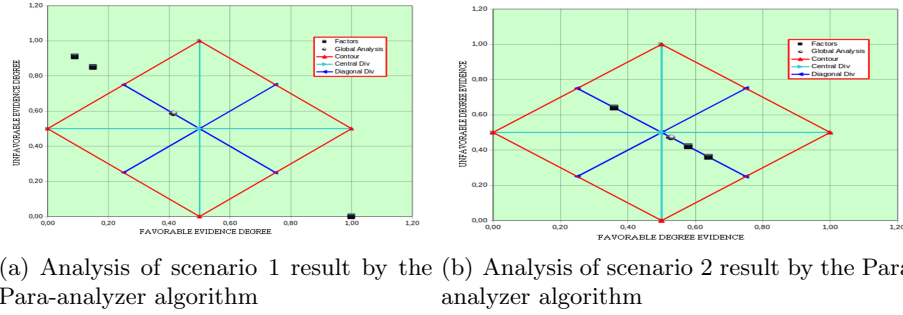
Scenarios	Normalized average speed (attribute 1)	Normalized number of requests (attribute 2)	Normalized number of zero bytes responses (attribute 3)	Attribute Evidence					
				1		2		3	
				$\mu$	$\lambda$	$\mu$	$\lambda$	$\mu$	$\lambda$
1	0.093417539	0.1565117821	0.0038207711	0.9	0.91	0.15	0.85	100	0
2	0.643085955	0.5875369132	0.3696885493	0.64	0.36	0.58	0.42	0.36	0.64

After the parameterization of the network attributes, the proposition "The computer network is functioning within its normal operating values ?" shall be analyzed. For this purpose, the Para-analyzer will be applied, representing scenarios 1 and 2, respectively in Figure 3 (a) and (b):

The global analysis is calculated considering the favorable evidences ( $\mu$ ) multiplied by their respective weights (all equal, in both scenarios), and finally added. The same is done to the unfavorable evidence ( $\lambda$ ) [11].

### 3 Analysis of the Results

In scenario 1, the global analysis presents a quasi-false result tending to para-complete and inconsistent to the normal network performance. Although the number of zero bytes responses attribute has high favorable evidence, this was not enough to represent a standard operation, since the other two attributes have not been sufficient to support the results. Diagnosis: the analyzed network in scenario 1 is not congested due to the low number of requests and is able to locate the searched resources. Abnormally, it still functions in low speed,



**Fig. 3.** Analysis of scenario 1 result by the Para-analyzer algorithm and Analysis of scenario 2 result by the Para-analyzer algorithm

which leads to the conclusion that the network is underutilized, or the network infrastructure project was oversized.

In scenario 2, the global analysis presents a quasi-true result, tending to paracomplete and inconsistent to the normal network performance. The high average speed and number of requests presents a situation of full use of the network capacity. However, it is observed that it begins to show clear signs of degradation due to the high number of zeros bytes responses. Diagnosis: the analyzed network in scenario 2 operates in a high degree of utilization, with early congestion signals and performance degradation.

## 4 Conclusions

As seen in both presented scenarios, the determination of the parameters in a computer network is a complex task. By their uncertainty and contradictory characteristics, and its dynamic operation, the Paraconsistent Annotated Evidential Logic  $E\tau$  emerges as an important tool for analysis of the environment.

**Some possible solutions for scenario 1:** Downsizing: sale or exchange of network devices (adapters, switches, routers) whose nominal capacity is beyond the need of the network. When possible, sharing or assignment of the installed infrastructure to another company or institution. Outsourcing services for companies that do not wish to have their own infrastructure.

**Some possible solutions for scenario 2:** Determining whether the congestion problem is systemic or occurs at only a few hosts. This can be done with the use of the Para-analyzer in different hosts of the network, and comparing the results with those obtained initially from the operating parameters. If the problem occurs at only few hosts, the solution is the physical or logic correction of the affected host(s). This task is usually simple, and its resolution is performed by a computer technician. If the problem is systemic, the analysis shall consider

the possibility of upgrading (where possible) or even exchange of switches or routers by other with higher capacity.

## References

1. Benadit, P.J., Sagayaraj Francis, F.: Improving the Performance of a Proxy Cache Using Very Fast Decision Tree Classifier. *Procedia Computer Science* pp. 304–312 (2015)
2. Kurose, J., Ross, K.: *Computer Networks: a Top-down Approach*. Wiley-Interscience, Boston, 6 edn. (2013)
3. Canali, C., Cardellini, V., Lancellotti, R.: Content Adaptation Architectures Based on Squid Proxy Server. *World Wide Web* 9(1), 63–92 (2006)
4. Davison, B.D., Wu, B.: Implementing a Web Proxy Evaluation Architecture. In: *CMG Las Vegas 2004: Proceedings : The 30th International Conference for the Resource Management and Performance Evaluation of Enterprise Computing Systems*, p. 1004. Computer Measurement Group, Incorporated, Nevada (2004)
5. Sysel, M., Doležal, O.: An Educational HTTP Proxy Server. *Procedia Engineering* 69, 128–132 (2014)
6. Romano, S., ElAarag, H.: A Neural Network Proxy Cache Replacement Strategy and its Implementation in the Squid Proxy Server. *Neural Computing and Applications* 20(1), 59–78 (2011)
7. Agarwal, T., Leonetti, M.: Design and Implementation of an IP Based Authentication Mechanism for Open Source Proxy Servers in Interception Mode. *Advanced Computing: An International Journal* 4(1), 23–33 (2013)
8. Rajamony, R., Elnozahy, M.: Measuring Client-perceived Response Times on the WWW. vol. 3. *USENIX Association*, San Francisco, California (2001)
9. Cardenas, L., Sahuquillo, J., Pont, A., Gil, J.: The Multikey Web Cache Simulator: A Platform for Designing Proxy Cache Management Techniques. pp. 390–397. *IEEE* (2004)
10. Abe, J.M., Akama, S., Nakamatsu, K.: *Introduction to Annotated Logics*, *Intelligent Systems Reference Library*, vol. 88. Springer International Publishing, Cham (2015)
11. Abe, J.M.: Paraconsistent Logics and Applications. pp. 11–18. *IEEE* (2010)